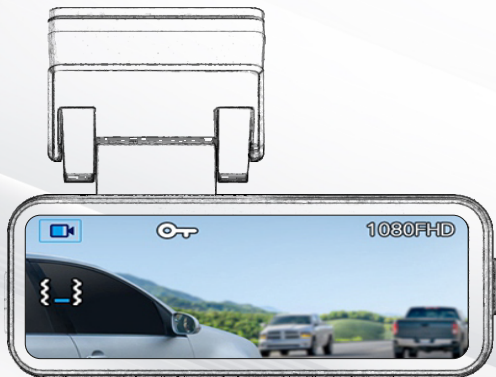


newvfron[®]

NF-V5240

HIGH DEFINITION
DRIVING RECORDER

User Manual



1. Appearance and Button Functions



- | | | |
|--------------|--------------------|------------------|
| 1. OK Button | 2. Scroll Down Key | 3. Scroll Up Key |
| 4. Menu Key | 5. Power Button | |

Basic Operations

● Taking Photos/Recording:

In preview mode, short press the OK button to start/stop recording.
Long press the OK button to take a photo.

● Switching Camera Views:

Short press the Scroll Up Key to toggle between front/rear/dual-camera preview modes.

● Turning Screen On/Off:

Short press the Power Button to turn the screen on or off.

2. Installation Guide

- ① Turn off the car engine.
- ② Insert a high-speed TF card (Class 10 or above, 8GB–128GB) into the recorder's card slot.
- ③ Mount the recorder on the windshield using the bracket.
- ④ Plug the 2A/5V car charger into the cigarette lighter.
- ⑤ Connect the recorder's USB port to the charger using the provided cable.

Tip: Route the cable along the windshield edge for a tidy setup.

- ⑥ Adjust the lens to ensure it is level with the ground.
- ⑦ Start the engine to verify installation:
The system indicator will light up, and the recording indicator will flash.

3. Mobile App Setup

- ① Download the App:



Viidure



Phone DVR

- ② Scan the QR code below via WeChat or search for "Wind Recorder" in the App Store (iOS) or Google Play (Android)

DashCam

Your Reliable Driving Companion.



ULTRA HIGH
DEFINITION



RoHS
COMPLIANT

4. Key Features

① **Wi-Fi Connectivity**

Enable the recorder's Wi-Fi (SSID: wDvr-XXXXXXX, default password: 12345678).

Use the app to view footage, adjust settings, or download files.

② **Auto-Recording**

Starts when the engine turns on; stops and saves when the engine turns off.

Footage is saved in segments and overwrites old files when the TF card is full.

③ **G-Sensor (Collision Lock)**

Locks footage during collisions to prevent overwriting.

Tip: Adjust sensitivity in settings.

④ **Parking Monitoring**

Requires constant power (with a voltage reducer).

Activates recording if a collision is detected while the car is off.

⑤ **ADAS (Advanced Driver Assistance)**

Alerts for lane departure, forward collisions, pedestrians, and more.

Displays lane lines and frames detected objects on-screen.

⑥ **Blind Spot Detection (BSD)**

Alerts for fast-approaching vehicles/pedestrians in blind spots.

Flashing red lights and audio prompts indicate direction.

Note: ADAS and BSD cannot be used simultaneously.

5. Important Notes

① Data Disclaimer:

Recorded footage is for reference only. The manufacturer is not liable for misuse or data loss.

② TF Card Care:

Use Class 10+ cards. Avoid removing the card while powered on. Replace the card every 6 months (for 2 hours/day usage) to prevent wear.

③ Operating Conditions:

Temperature range: -20°C to 70°C. Avoid extreme humidity, water, or dusty environments.

④ Updates:

Features may differ after upgrades. Always refer to the latest product version.

This device aids driving but does not replace manual control.